



STARHOTELS®
PREMIUM

Tourist
MILANO

Tourist

MILANO

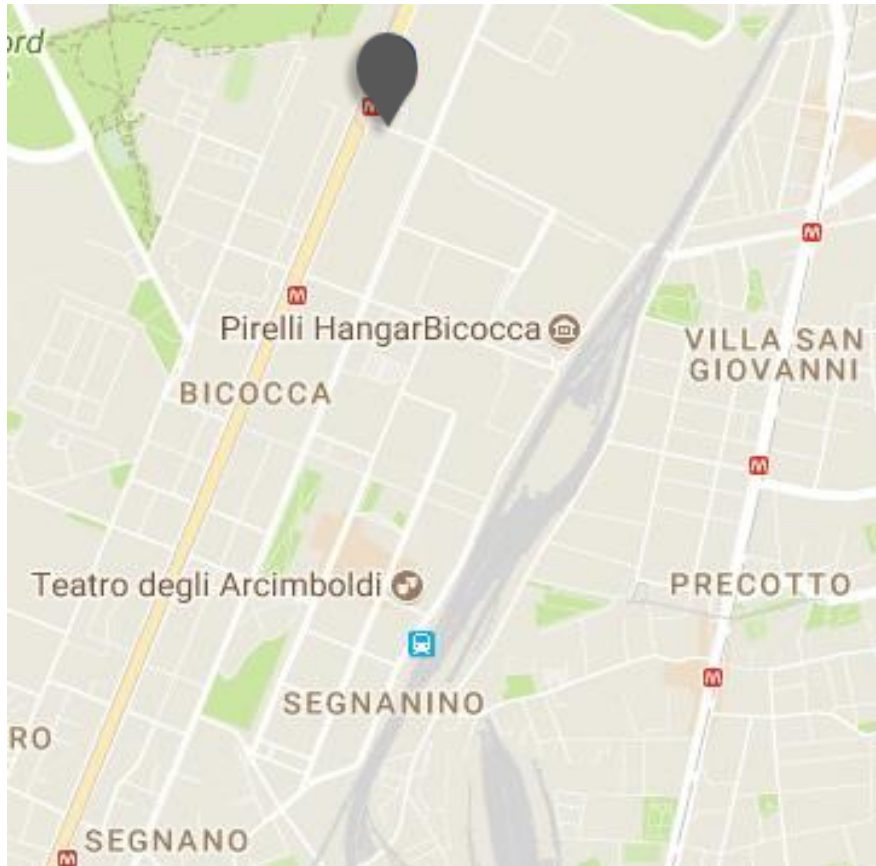


Milanese-style business

In the heart of Milan's financial district, a short distance from the Teatro degli Arcimboldi and with convenient transport links to the historic centre, the Starhotels Tourist provides its guests with a strategic location for a business trip or weekend break in this thriving metropolis. The 134 bright, spacious rooms and suites have all recently been restyled, like the welcoming lobby area, creating interiors of outstanding comfort and elegance.

Tourist

MILANO



Location

In the north-east area of Milan, opposite the Bignami underground stop of the new metro line 5, with excellent links to the historic centre

Distances

Railway station: Km 6

Highway: Km 3

Underground:

M1 (RHO Fiera / LOTTO Fiera) - M5 (LOTTO Fiera / Bignami)

Airport:

Linate Km 10 - Malpensa Km 50

Fairgrounds:

Milano (City) Km 7 - Milano (Rho) Km 20

Viale Fulvio Testi, 300 - 20126 Milano - ITALY

T +39 02 6437777 F +39 02 6472516

tourist.mi@starhotels.it

starhotels.com

Tourist

MILANO

Restaurant & Bar

La Cuccagnina restaurant offers a combination of Milanese and international cuisine in an elegant setting featuring original photos by Maurizio Galimberti.

The intimate, cosmopolitan atmosphere of L'Agorà bar, open until late at night, makes it the ideal spot for a good coffee, a light lunch or a cocktail.



Tourist

MILANO



134 Rooms

38 Classic
68 Superior
24 Deluxe
4 Junior Suite

The 134 elegant rooms and suites, recently renovated, offer every possible comfort. The chic, metropolitan interiors feature selected fabrics, wood and natural stone fittings and backlit blow-up photos on the walls.





Meetings & Events

Meeting rooms: 7

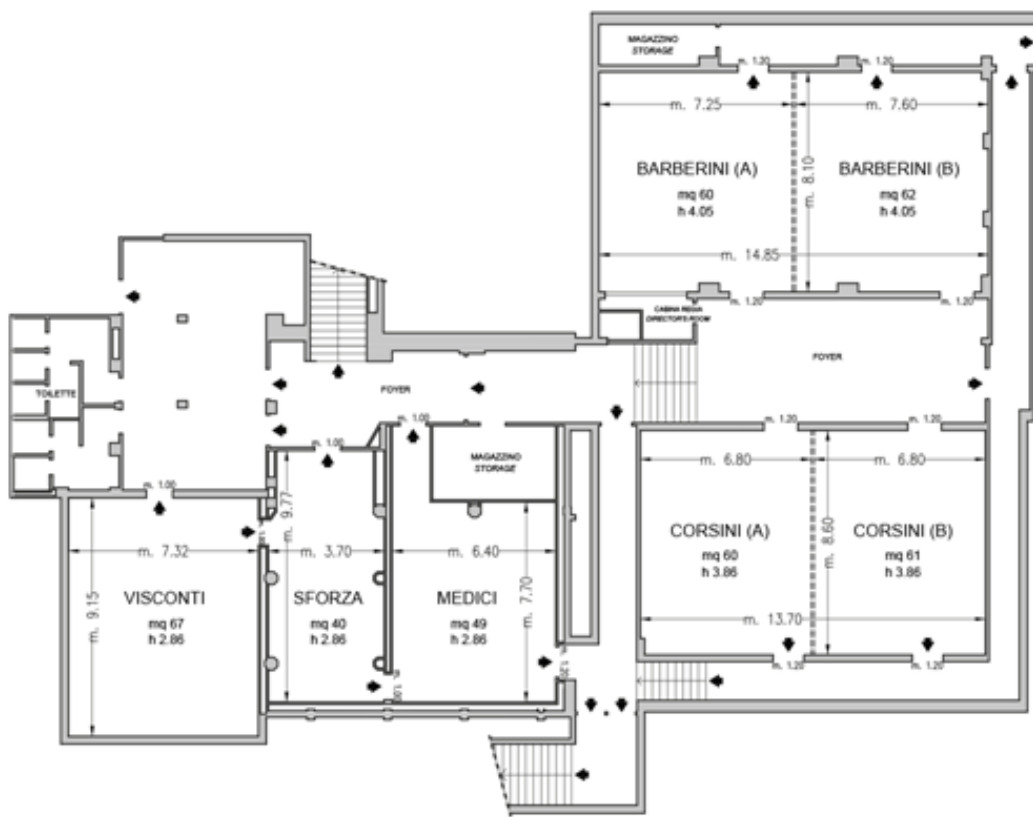
Capacity (theatre style): 120 max

The hotel's 7 meeting rooms are equipped with hi-tech facilities and can accommodate up to 120 people. A team of professionals is at guests' disposal to assist them with the organisation.



Tourist

MILANO



Piano -1 / Basement



Piano Terra / Ground Floor

- ◆ Uscite di sicurezza / Emergency Exits
- - - - Finestre / Windows
- ===== Pareti mobili / Modular Walls
- Colonne / Columns

Tourist

MILANO

Sale riunioni Meeting rooms	Area mq Area sq.ft.	Lung. x larg. mt. L x W ft.	altezza mt. height ft.	teatro theatre	banchi scuola class room	Tavola unico ferro di cavallo conference table/ U-shape	cabaret style [^]	cocktail reception	banchetto banquet
Barberini (A)	60 645,6	7,25x8,10 23,79x26,57	4,05 13,29	50	25	25	-	45	30
Barberini (B)	62 667,12	7,60x8,10 24,93x26,57	4,05 13,29	50	25	25	-	45	30
Barberini (A+B)	123 1323,48	14,85x7,60 48,70x24,93	4,05 13,29	120	54	54	25	120	70
Corsini (A)	60 645,6	6,80x8,60 22,31x28,22	3,86 12,66	50	25	25	-	45	30
Corsini (B)	61 656,36	6,80x8,60 22,31x28,22	3,86 12,66	50	25	25	-	45	30
Corsini (A+B)	121 1302,47	13,70x8,60 44,95x28,22	3,86 12,66	120	54	54	25	110	65
Visconti	67 721,18	9,15x7,32 30,00x24,00	2,86 9,38	55	30	26	-	70	40
Medici	49 527,42	7,70x6,40 25,26x21,00	2,86 9,38	40	25	18	-	25	15
Sforza	40 430,55	9,77x3,70 32,04x12,13	2,86 9,38	32	20	20	-	20	-
La Cuccagnina Restaurant ^o	180 * 1937,56	12,40x11,50+ 6,00x4,70 40,67x37,72+ 19,68x15,42	3 9,84	-	-	-	-	140	90

^o Luce naturale / Daylight

[^] Cabaret style: dimensioni tavoli su richiesta / Size tables on request

* Spazi con forme irregolari / Areas with irregular forms